

5G LPDA ANTENNA



An ISO 9001:2015 Certified Company

Technical Specifications:

Model No	LPDAOD5G14
Frequency Range	698-4000Mhz
Gain	14 DBI
VSWR	$\leq 1.8 - \leq 1.5$
Front to Back Ratio	≥ 15 dB
Vertical Beamwidth	105° - 59°
Horizontal Beamwidth	87° - 48°
Polarization Type	Vertical
PIM(IM3)	≤ -107 dBm @ 2 x 33 dBm
Max Power	50 W
Input Impedence	50 Ω

Operating Temperature	-40 °C to +65 °C
Relative Humidity	5 to 95%
Lightning Protection	DC ground
Rated Wind Velocity	210 km/h

Connector	N-Female
Mount	Pole Mount
Radome Material	ABS
Radome Color	White
Mounting Hardware	Φ 35 - Φ 50 mm
Clamp	U Clamp
Cable	RG 58
Cable Lengh	200 MM

Features

- Wide Frequency Range
- Excellent Electrical Performance
- Maintenance Free



CALL OR  **+91-8800386366**

Follow Us For More Updates **GLEAMLIGHTINDIA** /     

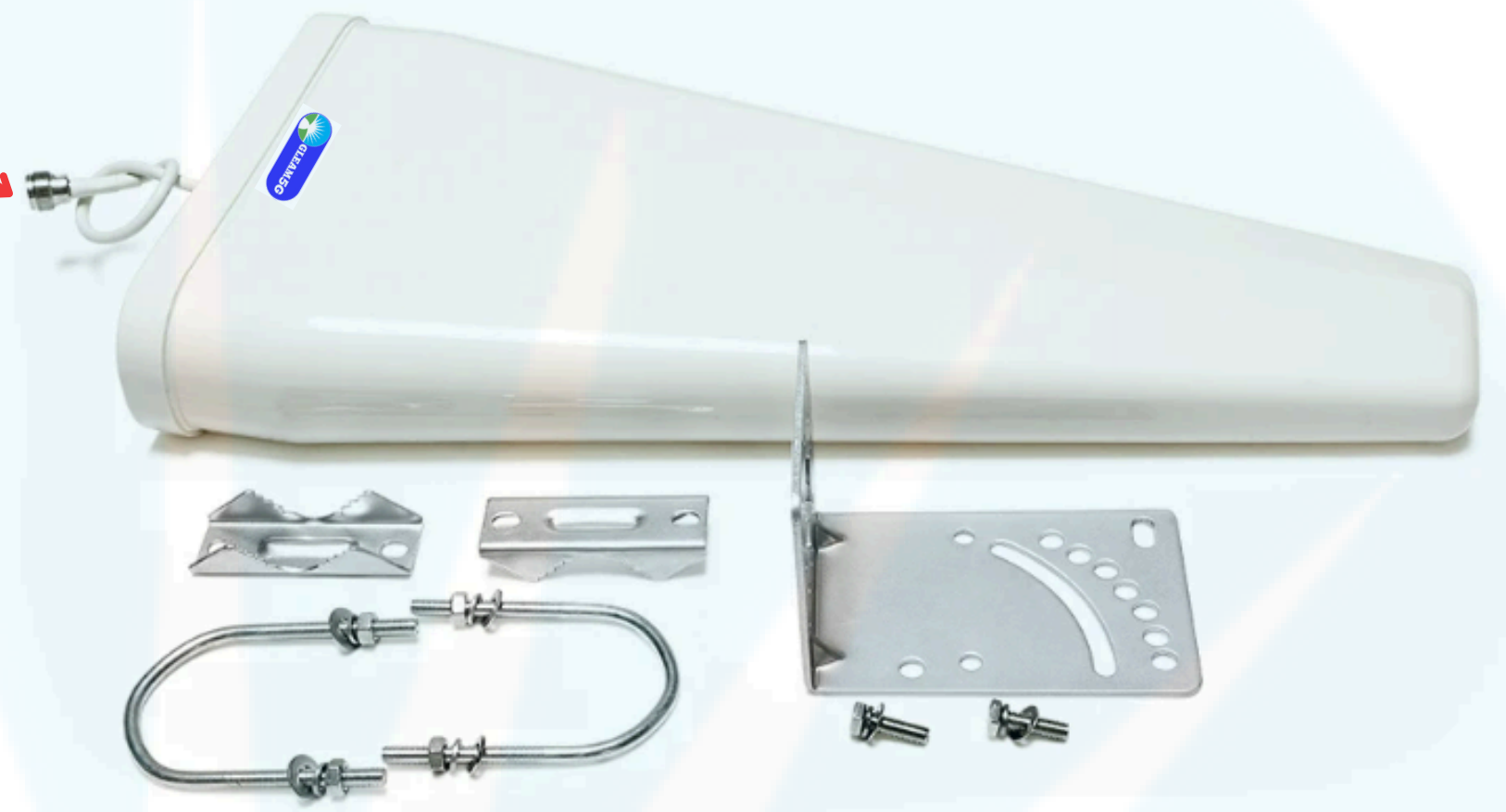
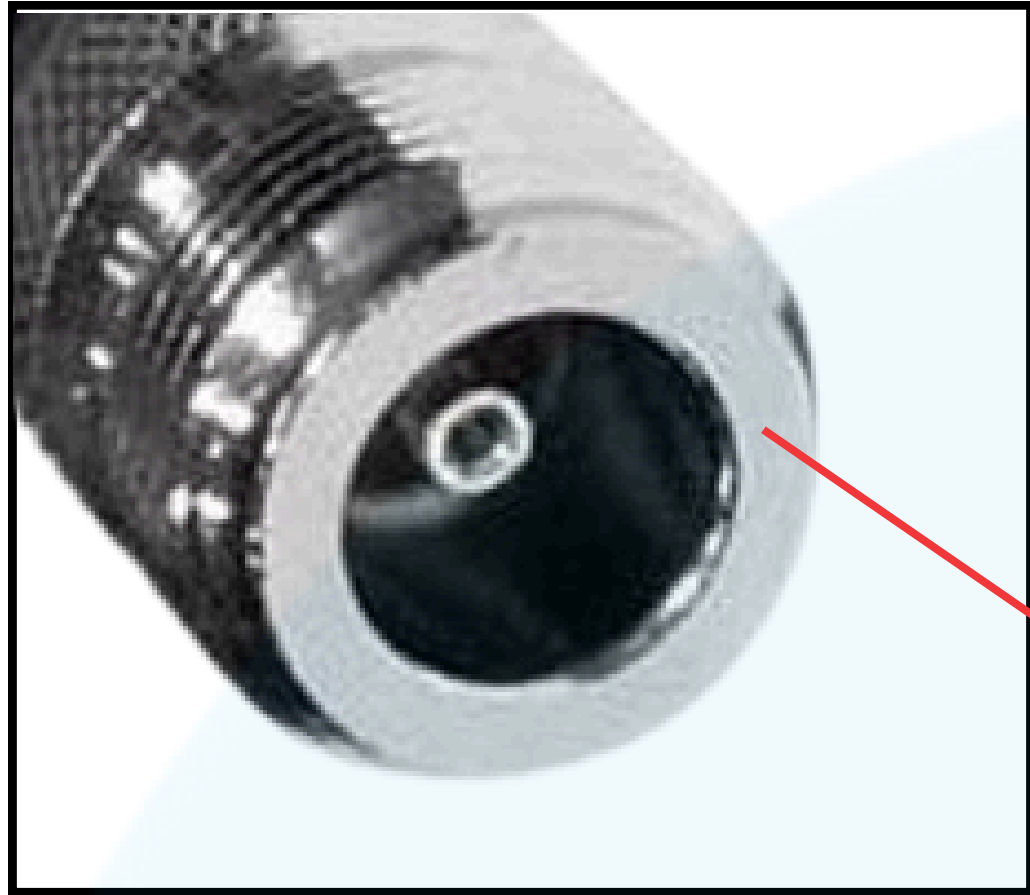
Info@gleamlightindia.com / www.gleamlightindia.in / www.gleamlightindia.com / www.gleamindia.com

12B Block -A, Behind Kanishka Garden, Amar Colony Main Rohtak Road Nangloi, New Delhi, Delhi 110041

5G LPDA ANTENNA



An ISO 9001:2015 Certified Company

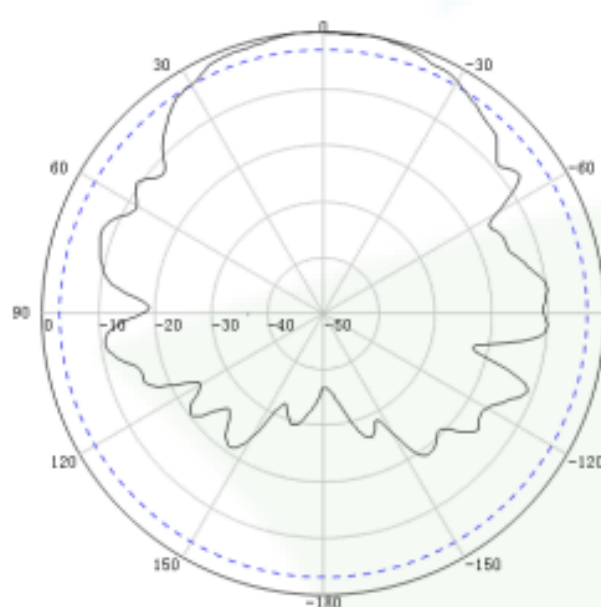
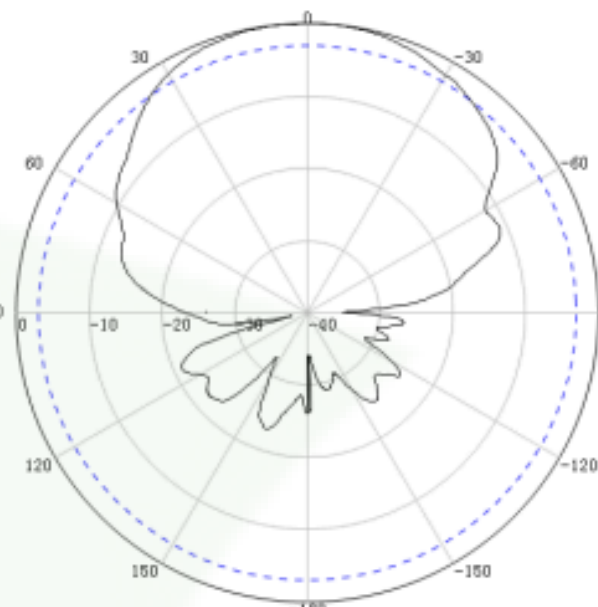
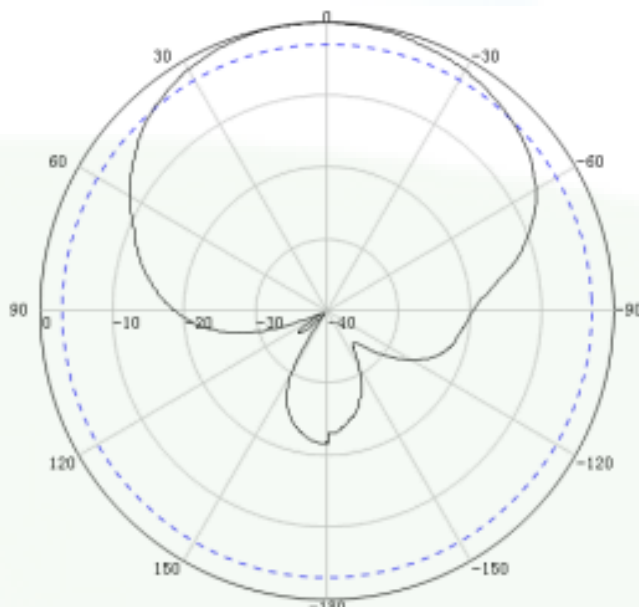


Radiation

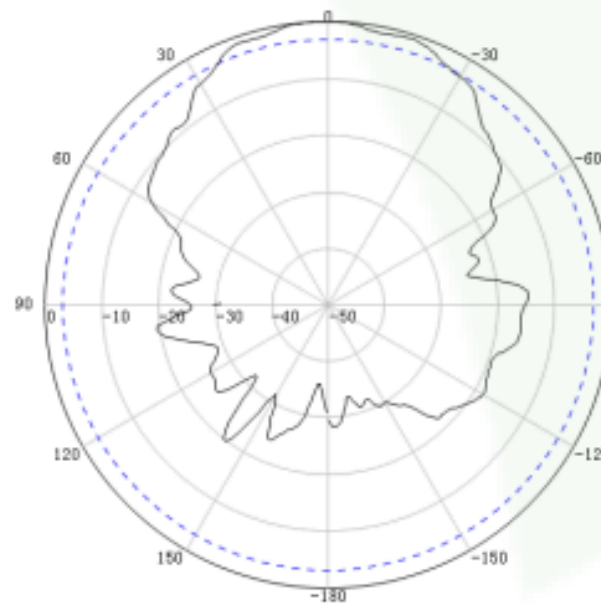
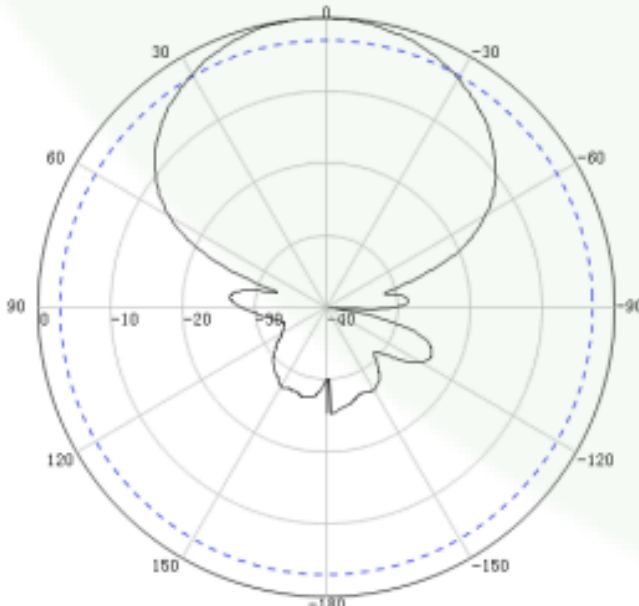
900 MHZ

1710 MHZ

2500 MHZ



Horizontal



Vertical



CALL OR  +91-8800386366

Follow Us For More Updates [GLEAMLIGHTINDIA](#) /     

Info@gleamlightindia.com/www.gleamlightindia.in/www.gleamlightindia.com/www.gleamindia.com

12B Block -A, Behind Kanishka Garden, Amar Colony Main Rohtak Road Nangloi, New Delhi, Delhi 110041